



RECP #: 752825

RECORDED 5/8/2019 AT 1:19 PM BK# 2620 PG# 1867
Debra K. Lee, CLERK OF LARAMIE COUNTY, WY PAGE 1 OF 1

STATE OF WYOMING CORNER RECORD

(In compliance with the CORNER PERPETUATION AND FILING ACT, Wyoming Statutes, 1997 Section 33-29-140, et. seq., and the Rules and Regulations of the Board of Registrations for Professional Engineers and Professional Land Surveyors)

NORTHWEST CORNER SECTION 19, T. 18 N., R. 63 W., 6TH P.M., LARAMIE COUNTY, WYOMING

GLO: SET A SANDSTONE 20X12X8, 15 IN. DEEP WITH 3 MARKS ON THE NORTH AND SOUTH EDGES FOR CORNER TO SECTIONS 13, 18, 19, 24.

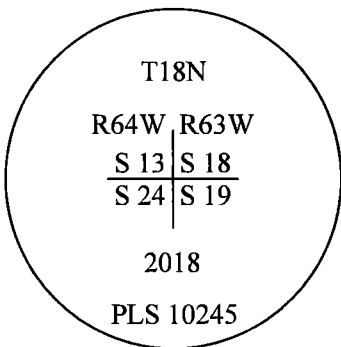
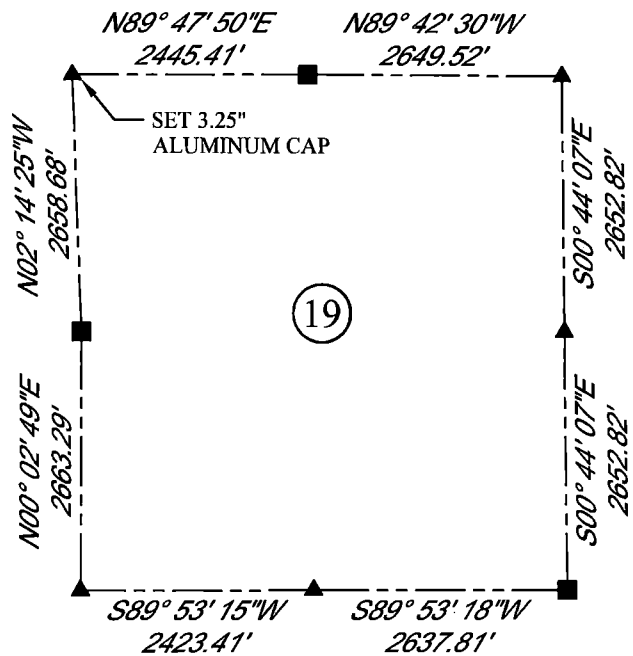
FOUND: REMAINS OF OLD SANDSTONE APPROXIMATELY 33' EAST OF NORTH AND SOUTH FENCE LINE.



SCALE: 1" = 2000'
NORTH DETERMINED BY
G.P.S OBSERVATIONS

FOUND: REMAINS OF SANDSTONE

SET 3.25" ALUMINUM CAP ON #5
REBAR, 2" BELOW SURFACE
STAMPED AS SHOWN. CORNER IS
SET AMONGST TO SANDSTONE
REMAINS.



LEGEND:

- FOUND BLM CAP
- FOUND USFS CAP
- FOUND STONE
- FOUND PRIVATE MONUMENT
- ◆ CALCULATED POSITION
- ▲ SET MONUMENT (LS10245)
- SECTION LINE

DATE OF FIELD WORK: 9/24/2018 OFFICE REFERENCE: MERIDEN

CROSS INDEX DIAGRAM

	1	2	3	4	5	6	7	8	9	10	11	12	13	14	15	16	17	18	19	20	21	22	23	24	25
A																									
B																									
C			6																						
D				5																					
E					4																				
F						3																			
G			7																						
H				8																					
J					9																				
K						10																			
L							11																		
M								12																	
N									13																
O										14															
P											15														
Q												16													
R													17												
S														18											
T															19										
U																20									
V																	21								
W																		22							
X																			23						
Y																				24					
Z																					25				

WOOD
2615 AVIATION DRIVE
SHERIDAN, WY 82801
PH: 307-675-6400



THIS CORNER RECORD WAS
PREPARED BY ME OR UNDER
MY DIRECTION AND
SUPERVISION,
SEAL AND SIGNATURE

